

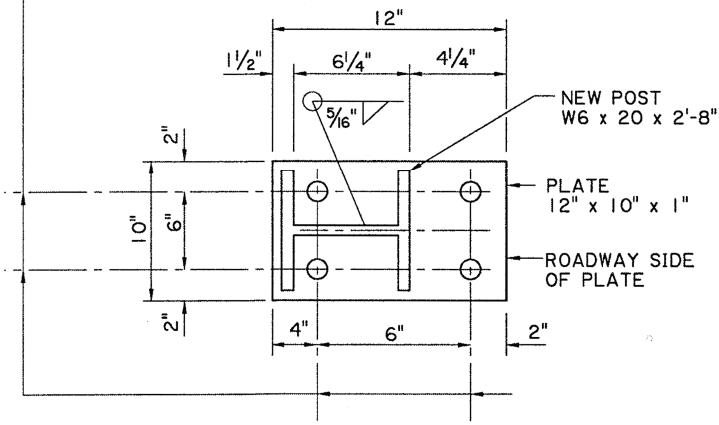
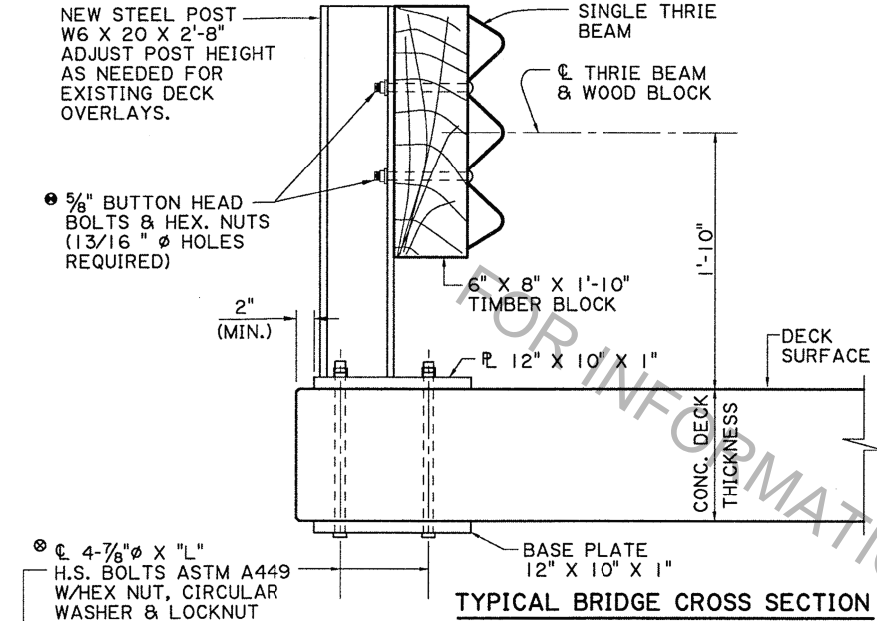
NOTES

ALL HARDWARE INVOLVED SHALL BE REPLACED BY NEW HARDWARE.
 FOR ADDITIONAL INFORMATION ON GUARD RAIL, SEE STD. PLAN GR-200.
 ALL STRUCTURAL STEEL, POST AND PLATES, SHALL BE ASTM A-36 AND GALVANIZED. ALL 5/8"Ø BOLTS SHALL BE ASTM A307.

• THE BOLTS IN THE GUARD RAIL SHALL BE LOCATED ON THE ONCOMING FLANGE TRAFFIC SIDE.

ALTHOUGH ITEM 704-01-01020 CALLS FOR 6'-3" MAX. POST SPACING, THE NEW POST FOR EXISTING PRECAST BRIDGES SHALL BE INSTALLED AT THE SAME LOCATION AS THE OLD ONES. ALL GUARD RAIL SPLICES SHALL BE MADE AT POST LOCATIONS ONLY.

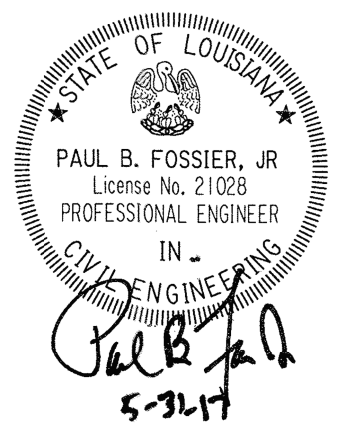
ALL WORK AND MATERIALS REQUIRED TO INSTALL THE NEW GUARD RAIL SHALL BE PAID FOR UNDER ITEM 704-01-01020 GUARD RAIL (SINGLE THRIE BEAM) (6'-3" POST SPA.) PER LIN. FT.



TYPICAL BRIDGE CROSS SECTION

BASE PLATE FOR POST ASSEMBLY
 12" x 10" x 1" STEEL

• BOLTS LENGTH TO BE FIELD MEASURED AND ADJUSTED BASED ON ACTUAL DECK THICKNESS. SUBMIT TO DOTD BRIDGE DESIGN ENGINEER FOR REVIEW BEFORE INSTALLATION



	GUARD RAIL REHABILITATION (FLAT DECK PRECAST BRIDGES)		NO.	DATE	REVISION OR CHANGE ORDER DESCRIPTION	BY	DESIGNED CHECKED	P. FOSSIER C. GAUDRY	PARISH	SHEET NUMBER
			4-8-16		GUARDRAIL HEIGHT, ANCHOR BOLT NOTE AND BASE PLATE	P. F.	REVIEWED	K. BRAUNER	STATE PROJECT	
STANDARD DETAIL	BD.2.6.4.1.09						DETAILED CHECKED	J. BENTON P. FOSSIER	CONTROL SECTION	